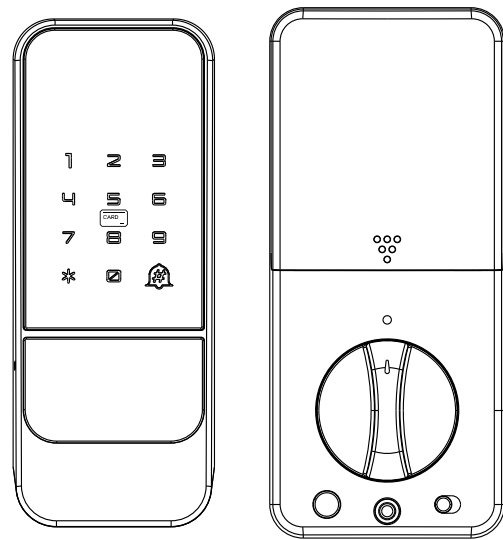


Smart Lock

Installation Guide

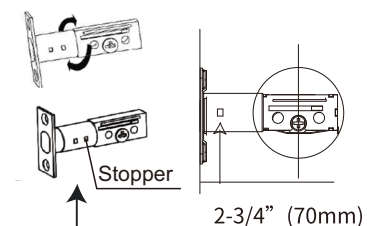


Product Model: SL20

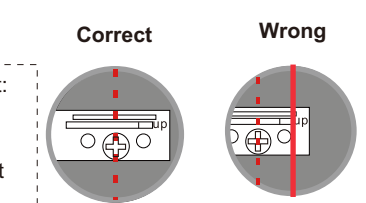
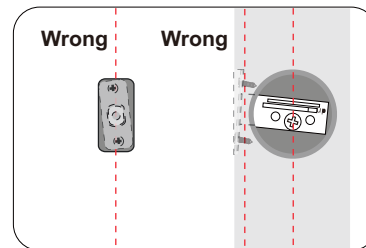
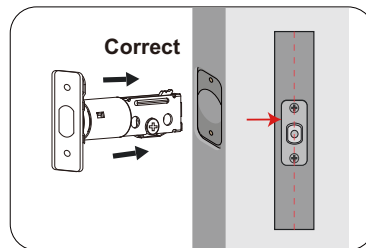
1. Install Bolt



Make sure + slot is at the bottom

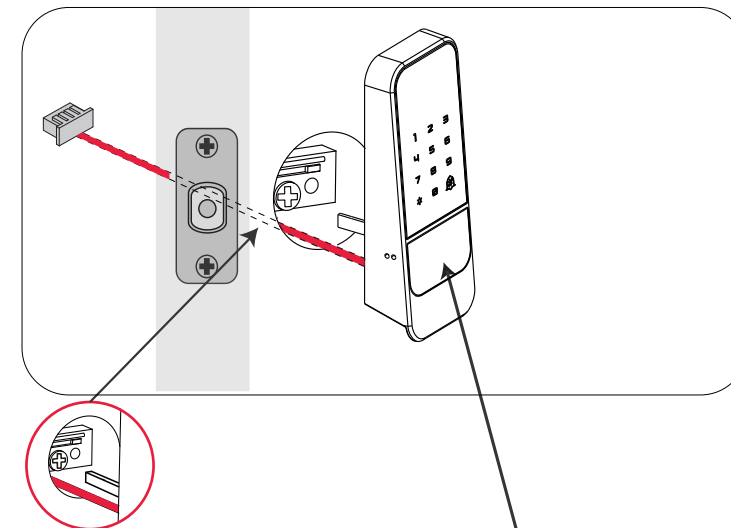


To adjust the bolt for a 70mm backset:
1. Ensure the latch is fully retracted.
2. Rotate the bolt clockwise until the stopper is completely out of the limit zone.
3. Extend the bolt tail, then rotate it counterclockwise until the stopper securely re-engages in the limit zone.



3. Install Front Body

! Ensure the latch is retracted during installation.

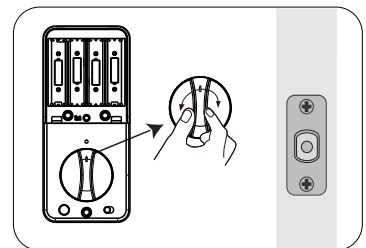
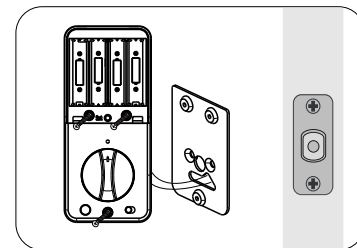


1. Feed the cable under the bolt.
2. Ensure the spindle is vertical, then align it with the slot in the bolt.
3. Snap the front body into place.

Do not insert the key during installation.

5. Ensure the thumb turn is in a vertical position, then secure the back body to the door using three M4X22 screws.

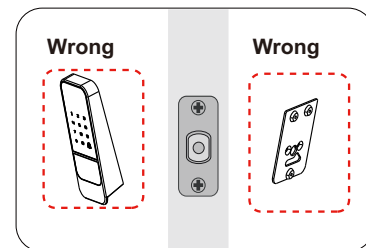
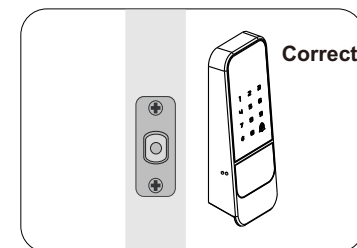
6. Turn the thumb turn to extend and retract the bolt.



Turn the thumbturn to check if the bolt moves smoothly. If it doesn't, make sure the bolt was installed in the retracted position and that both the thumbturn and spindle were vertical during installation.

5. Test the Lock

! Test the lock only after completing the full installation.

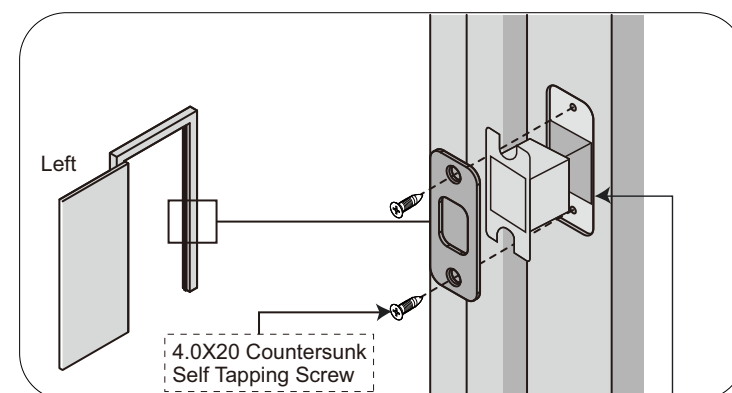


1. Use the mechanical key to check if the bolt works smoothly. If not, review steps 2, 4, and 5, then check whether the spindle is too long.
2. Ensure the lock is straight. Adjust mounting screws if needed.
3. Insert batteries and unlock using the default management code 12345678 + #.

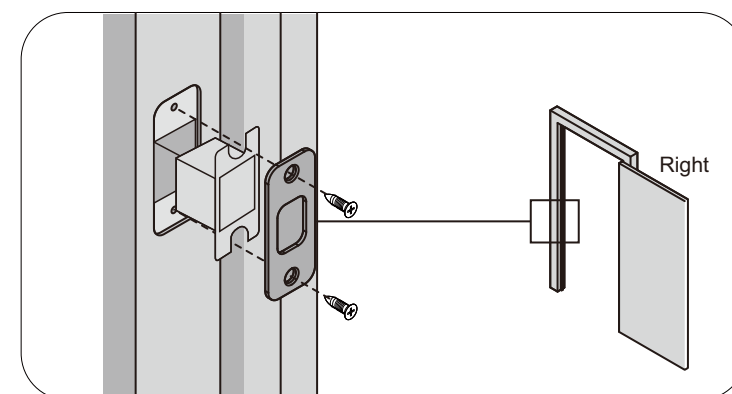
In the Box

Front Body	Mechanical Key	Bolt
Backing Plate	Back Body	Strike Box
Mounting Screws	Strike Plate	Fixing Screws

2. Install Strike Box and Strike Plate



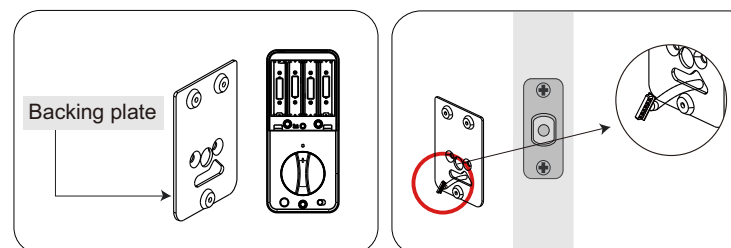
The hole drilled in the door jamb must be at least 25mm deep.



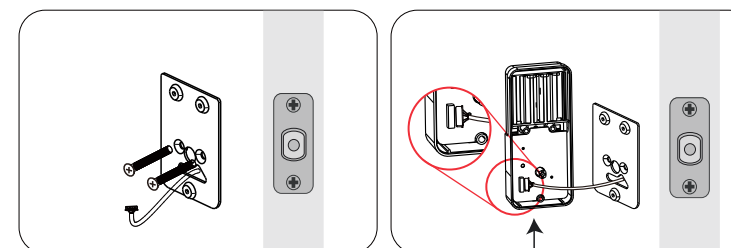
4. Install Back Body

! Do not insert batteries during installation.

1. Take the backing plate out of the box.
2. Route the cable through the slot at the bottom of the plate.



3. Secure the backing plate using two M5X25 or M5X35 screws as per your door thickness.
4. Connect the cable to the circuit board.

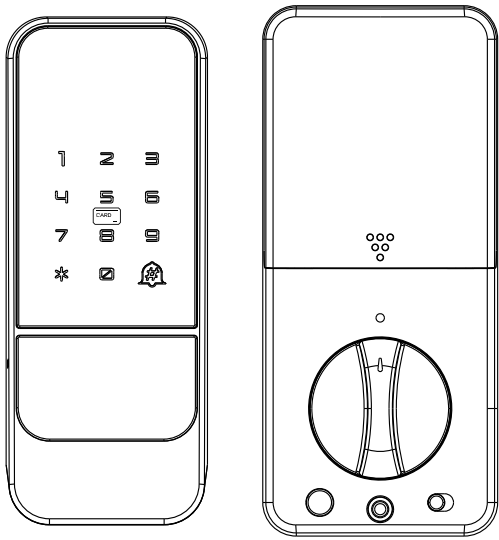


Note: Hold the front body straight while securing the backing plate.

Note: Ensure the smooth side of the connector is facing upward.

Smart Lock

User Guide



Product Model: SL20

Factory Default Settings

Setting	Default Value
Admin Code	12345678
Auto Lock	Enabled
Mute Mode	Disabled
Failed Password Attempt	5 times
System Lock Duration	3 mins
Double Lock Mode	Disabled

- ☆ **Battery Requirement**
- 4 new AA alkaline batteries (do not mix new and old)
- ☆ **Capacity**
- 1 Admin Code
 - Up to 20 User Codes
 - Up to 50 RFID Cards
 - Up to 5 Temporary Passwords

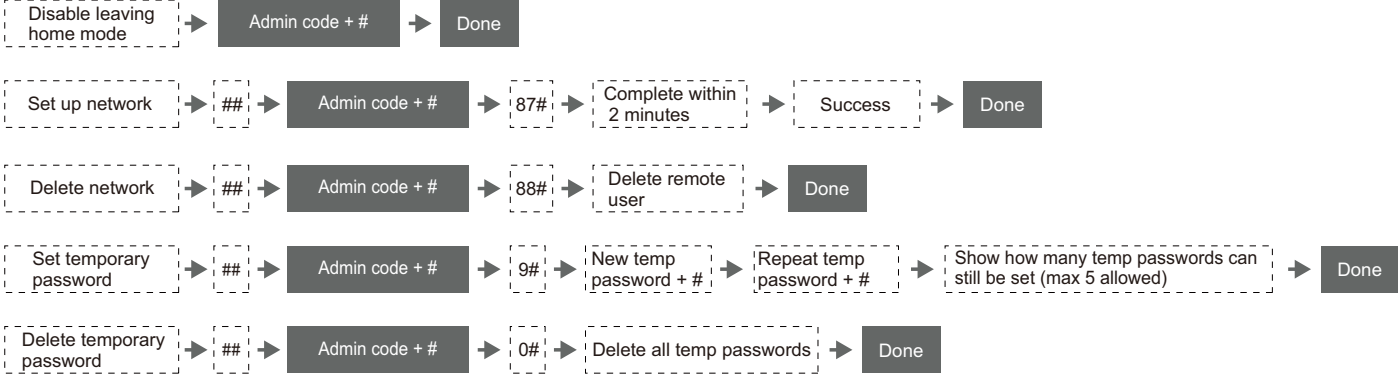
! If setting fails, the lock will flash a red light.

- ! 1. Before setup, detece the door's swing direction:
- With the door open, press and hold the Set button, then power on the lock.
 - Release the button when you hear a beep. The lock will automatically close to complete the detection.
2. A factory reset will erase all data and restore default settings. The admin code will be reset to 12345678.
3. After a reset, you can unlock the door using any card or the deafult code 12345678#. To ensure security, set a new admin code immediately. Once changed, the default code will become invalid.
4. To enter management mode: press ## (or the Set button) + admin code + #. The red * will flash.

! When the Lock is Unlocked



(In Leave Home mode, only the admin code can unlock the door.)

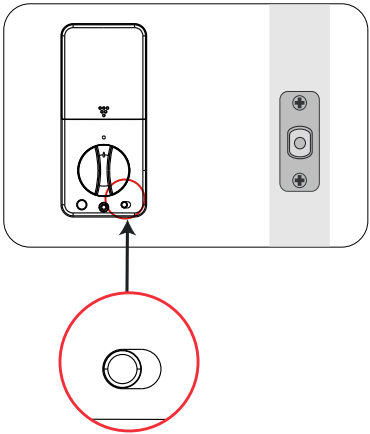


Notes:

1. Low battery alert: After unlocking, the red light flashes 6 times. Replace the batteries promptly.
2. The system locks after 5 consecutive failed password or card attempts. To exit lockout:
 - Wait 3 minutes for it to clear automatically.
 - Unlock with a valid credential, then press the Set button.
3. Double Lock: Toggle the indoor electronic double lock switch to the left.Only the admin code can unlock the door in this case.
4. Fake PIN code: Enter random digits before and/or after your PIN. The lock verifies the last 20 digits and unlocks if the correct PIN is included.
5. Factory reset: With the door open, hold the Set button for 5 seconds until you hear a beep. Release the button and press # to confirm the reset.
6. Remote unlock: Press # in standby mode to ring the doorbell and request remote unlock approval from the remote user.

Warning

- ☆Keep your user and admin codes secure to prevent unauthorized access.
- ☆For better security, limit access to lock settings and update the admin code regularly to avoid unauthorized changes.
1. The admin code must be 6-8 digits. The default is 12345678; please change it before first use.
 2. User codes are also 6-8 digits in length.



Electronic Double Lock Switch
Left: Enable electronic lock function
Right: Disable electronic lock function

Product Overview

